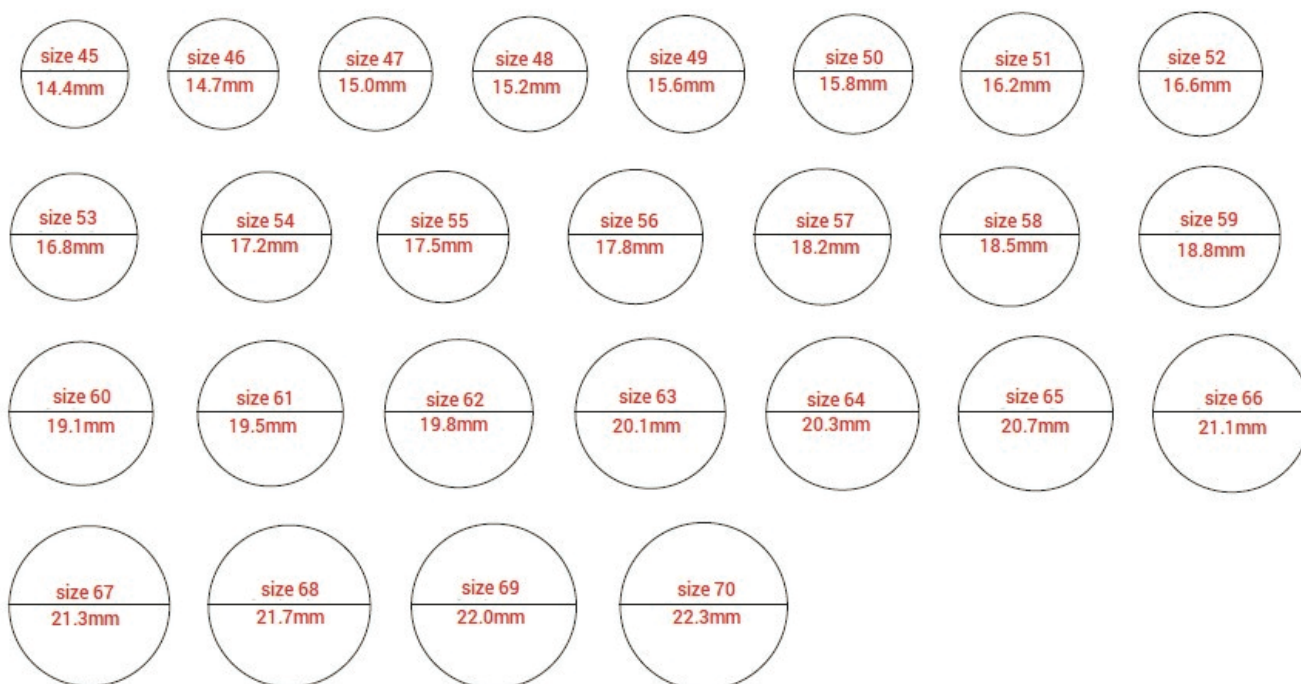
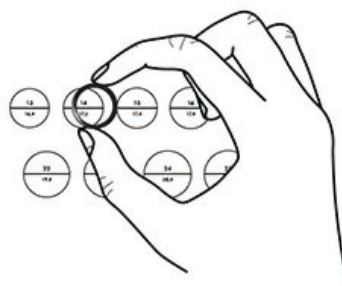
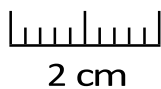


# FIND YOUR RING SIZE

## PLACE YOUR RING ON THE CIRCLE



**Step 1:** Choose a ring which fits to the same finger and hand as the ring you want to buy.

**Step 2:** Print this page without scaling (A4-100%) and VERIFY with a ruler if the scale correspond with the above mentioned 2 cm !

**Step 3:** Place this ring on the circles.

The circle must have the exact same diameter as the interior of your own ring.

The black circle needs to stay fully visible when you place your ring on the circles.

**Tip:** Place the ring on one side nicely on the drawing so that the circle is clearly visible.

*If you do not see the same thickness of the circle on the other side you do not have the right size.*

*If the circle has the same thickness everywhere you have the right size.*

**Please note that the style of the ring can affect the ring size!**

**If your ring is between two sizes, we advise you:**

**in case of a wider ring to size up ... in case of a finer ring to size down.**

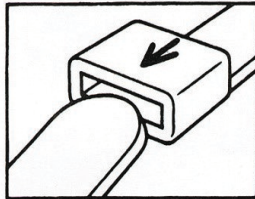
## ORDER A PLASTIC RING SIZE METER



### CHECK YOUR RING SIZE

EASY TO USE AND ACCURATE

READ INSTRUCTIONS CAREFULLY



#### STEP 1

The multisizer works like a belt. Simply turn around and put the end through to form a ring shape.



#### STEP 2

Slide the multisizer on your finger and adjust until it feels comfortable.

**CHECK** that it moves over the joints of the finger without difficulty



#### STEP 3

Simply read off the indicated size when best fit is achieved on your finger.

(size 56 shown)

*In case you have doubts about the right ring size, we offer an extra service by sending a plastic adjustable multisizer to measure the exact ring size.*

**Cost sending by mail = 10 euros**

**=> Refunded to your account ONLY after the purchase of your new ring!**

**TIPS: A ring must sit comfortably.**

**It must be tight enough so that you do not lose it,  
but at the same time just loose enough to slide it over your finger.**

**! Keep in mind that the finger may change slightly in size depending on the time of the day and the weather.**

**To avoid a wrong measurement, it is better to measure the size 3 to 4 times at different times.**

***ArteLocoFab is not responsible for any mismeasurement.  
If you have any questions, please contact us at [artelocofab@yahoo.com](mailto:artelocofab@yahoo.com)***

## COMPARE YOUR RING SIZE

Find your correct ring size in this international size table.

| BE | DE/FR | NL   | SUISSE | ES | UK | US/CAN | CN/SG/JP | HK    | mm   |
|----|-------|------|--------|----|----|--------|----------|-------|------|
| 45 | 45    | /    | 5      | 5  | G  | 3 1/3  | 5        | 7,5   | 14,3 |
| 46 | 46    | 14,5 | 6      | 6  | H  | 3 2/3  | 6        |       | 14,7 |
| 47 | 47    | 15,0 | 7      | 7  | /  | 4      | 7        | 9     | 15,0 |
| 48 | 48    | 15,5 | 8      | 8  | I  | 4 1/2  | 8        | 10    | 15,3 |
| 49 | 49    | /    | 9      | 9  | J  | 5      | 9        | 11    | 15,6 |
| 50 | 50    | 16,0 | 10     | 10 | K  | 5 1/3  | 10       | 12    | 16,0 |
| 51 | 51    | /    | 11     | 11 | /  | 5 2/3  | 11       |       | 16,3 |
| 52 | 52    | 16,5 | 12     | 12 | L  | 6      | 12       | 13    | 16,6 |
| 53 | 53    | 17,0 | 13     | 13 | M  | 6 1/3  | 13       | 14,5  | 17,0 |
| 54 | 54    | /    | 14     | 14 | N  | 6 2/3  | 14       | 16    | 17,2 |
| 55 | 55    | 17,5 | 15     | 15 | O  | 7      |          |       | 17,5 |
| 56 | 56    | /    | 16     | 16 | /  | 7 1/2  | 15       | 17    | 17,8 |
| 57 | 57    | 18,0 | 17     | 17 | P  | 8      | 16       | 18    | 18,1 |
| 58 | 58    | 18,5 | 18     | 18 | Q  | 8 1/3  | 17       | 19    | 18,4 |
| 59 | 59    | /    | 19     | 19 | R  | 8 2/3  |          |       | 18,8 |
| 60 | 60    | 19,0 | 20     | 20 | S  | 9      | 18       | 20,5  | 19,1 |
| 61 | 61    | 19,5 | 21     | 21 | /  | 9 1/2  | 19       | 22    | 19,4 |
| 62 | 62    | /    | 22     | 22 | T  | 10     | 20       | 23    | 19,7 |
| 63 | 63    | 20,0 | 23     | 23 | U  | 10 1/3 | 21       | 24    | 20,0 |
| 64 | 64    | 20,5 | 24     | 24 | V  | 10 2/3 | 22       |       | 20,4 |
| 65 | 65    | /    | 25     | 25 | W  | 11     | 23       | 25    | 20,7 |
| 66 | 66    | 21,0 | 26     | 26 | X  | 11 1/2 | 24       | 26    | 21,0 |
| 67 | 67    | /    | 27     | 27 | Y  | 12     | 25       | 27,75 | 21,3 |
| 68 | 68    | 21,5 | 28     | 28 | /  | 12 1/3 | 26       |       | 21,7 |
| 69 | 69    | 22,0 | 29     | 29 | /  | 12 2/3 |          |       | 22,0 |
| 70 | 70    | /    | 30     | 30 | /  | 13     | 27       | 30    | 22,3 |